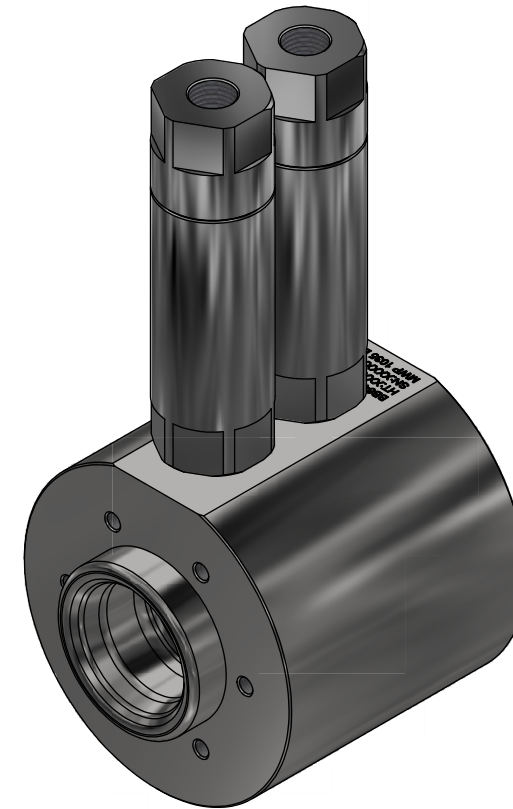
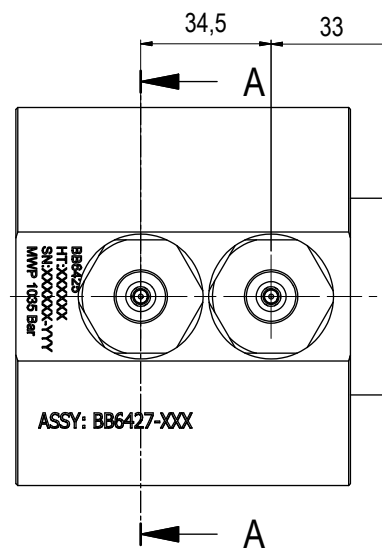
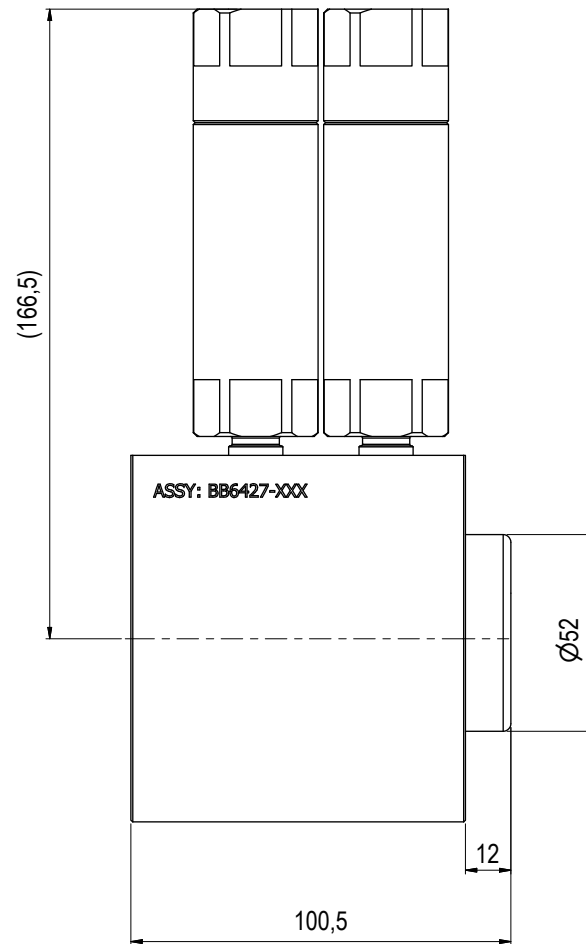
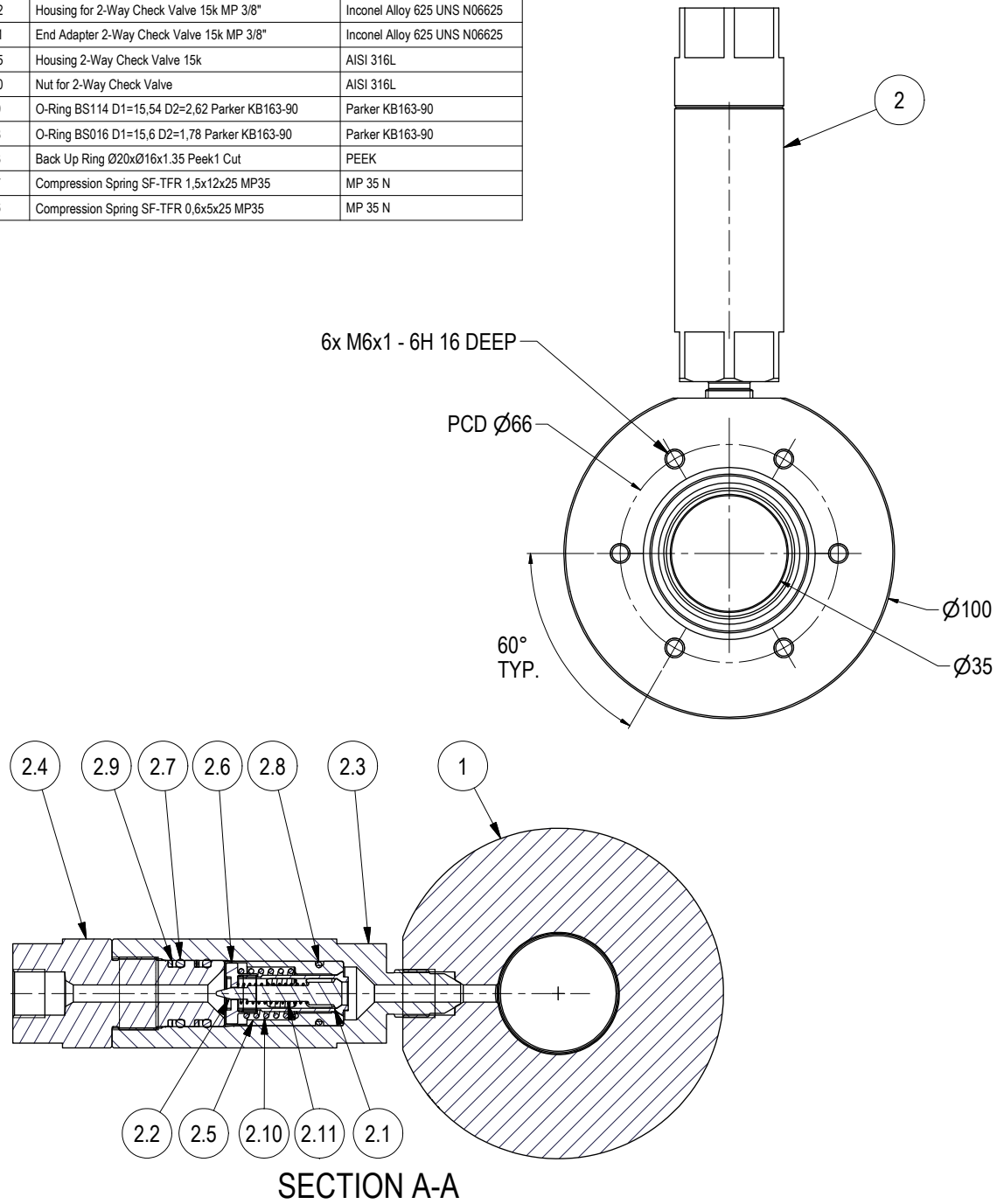


Parts List				
ITEM	QTY	PART No.	DESCRIPTION	MATERIAL
1	1	BB6425	Ø35 DP Rec 15k MP 3/8"	AISI 316L
2	2	BB6420	2-Way Check Valve 15k MP 3/8" 2.0-0.5 Bar FEM-MA	Assembly of Item 3-13
2.1	1	PA0210	Ring Poppet 2-Way Check Valve	UNSC63200 (OM7)
2.2	1	PA0209	Center Poppet 2-Way Check Valve	AISI 316L
2.3	1	BB6422	Housing for 2-Way Check Valve 15k MP 3/8"	Inconel Alloy 625 UNS N06625
2.4	1	BB6421	End Adapter 2-Way Check Valve 15k MP 3/8"	Inconel Alloy 625 UNS N06625
2.5	1	BB5615	Housing 2-Way Check Valve 15k	AISI 316L
2.6	1	BB5590	Nut for 2-Way Check Valve	AISI 316L
2.7	2	104309	O-Ring BS114 D1=15,54 D2=2,62 Parker KB163-90	Parker KB163-90
2.8	1	104308	O-Ring BS016 D1=15,6 D2=1,78 Parker KB163-90	Parker KB163-90
2.9	2	104113	Back Up Ring Ø20xØ16x1.35 Peek1 Cut	PEEK
2.10	1	100507	Compression Spring SF-TFR 1,5x12x25 MP35	MP 35 N
2.11	1	100506	Compression Spring SF-TFR 0,6x5x25 MP35	MP 35 N



NOTE: 1  
 DESIGN CODE:  
 API 17H Type 1  
 API 6A (PSL 3)  
 NACE MR0175/ISO 15156  
 NORSOK M-710, rev 2

NOTE: 2  
 TECHNICAL CLASSIFICATION:  
 Article Type: 001-Hot Stabs  
 Main Group: 1.01. Ø35 Hot Stab  
 Intermediate Group: 1.1.02. Receptacle  
 Sub Group: 1.1.2.02. Dual

NOTE: 3  
 INTERFACE INFORMATION:  
 Pressure Rating Bar: 1035 (15000 PSI)  
 Design Water Depth: 3000m  
 Material: See Part List  
 Weight in Air: 6,1 kg  
 Volume: 0,78 dm<sup>3</sup>  
 Submerged Weight: 5,31 kg  
 Surface Area: 1291 cm<sup>2</sup>  
 Hydraulic: 3/8" MP Female  
 Mechanical: 6xM6@PCD 66  
 Electrical: N/A  
 Com. & Protocol: N/A

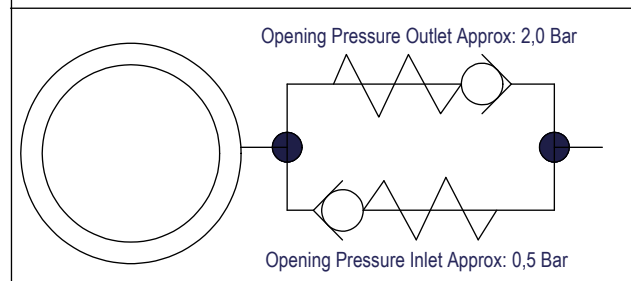
NOTE 4  
 Max Recommended Flow Rate 30 l/min. For pressure drop vs flow ref. OMM doc no 500408-TD-0023

NOTE 5  
 Min/Max operating temperature -10/+50 deg C  
 Min/Max storage temperature -20/+50 deg C

NOTE 6  
 Testing Pressure 1,25 x RWP = 1294 BAR / 18750 PSI

NOTE 7  
 Use Loctite 243 on Medium Pressure Threads

NOTE 8  
 Torque Value on Check Valves: 45Nm



Rev.	Date	Reason for issue	Revision change	Made	Chk'd	Appr.
03	3.8.2021	9-IFU (Issued for Use)		HNJ	TGU	HNJ
02	17.6.2021	7-IFC (Issued for Construction)		WTJ	HNJ	WTJ
01	8.4.2021	2-IFT (Issued for Tender)		HNJ	N/A	N/A



Dwg Scale: NTS	Dwg Proj:	Drawing title: Ø35 DP Rec 15k Interv wCV MP 3/8"
Dwg Format: A3		Drawing number: BB6427
		Rev: 03